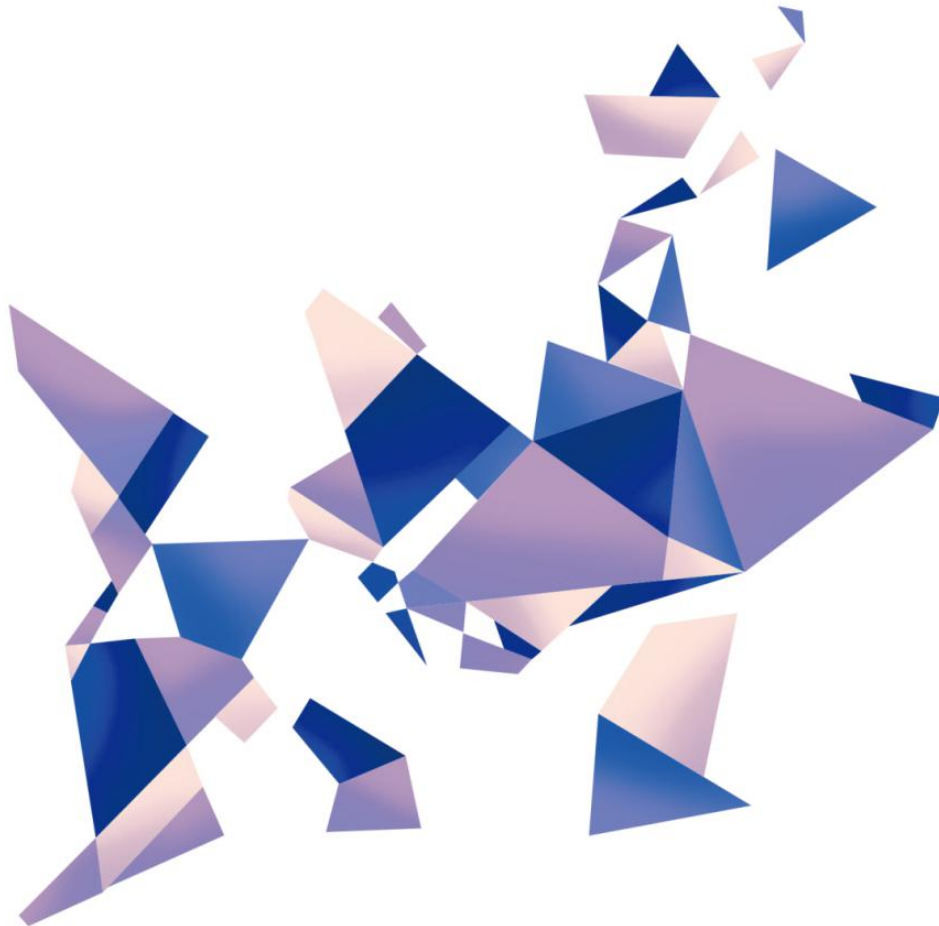


KP2H/KP4H

Pandora series

Version: v1.0

release date:December 2021



Manual



TEL 400 159 0808
Web: www.kystar.com.cn

Beijing KYSTAR Technology Co., Ltd.

Professional Ultra HD Video Display
Control system integrated solution and service provider

Version record


version number	Change details	release time
V1.0	first release	2021.12.29

1, Product introduction

Beijing KYSTAR Technology Co., Ltd. launched asynchronous Pandora box for LED full color screen

Here introduces the common connection mode of Pandora box and the operation steps of the management software Kommander PE.

Software

Name	Type		Get address
Pandora box	Mobile	Android	 使用微信扫一扫下载app
		IOS	Search “kystar box” in Apple store
Kommander PE	PC	Windows	http://www.kystar.net/Down/82.html

information

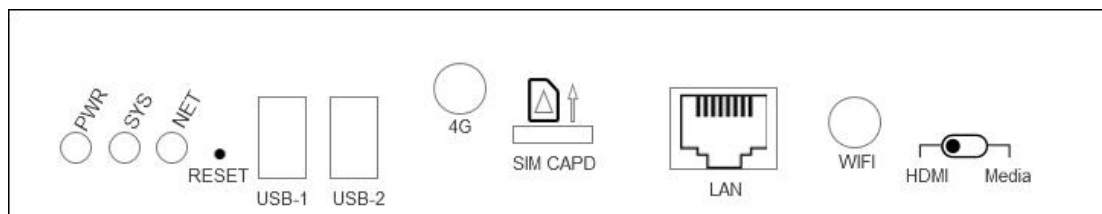
Type	Name	Password
Connect Pandora WiFi Hotspot	KYSTAR+model+SN+4 digits E.g: KP4H-21070001	8888 8888

Note: it is recommended to change the default password to improve the security

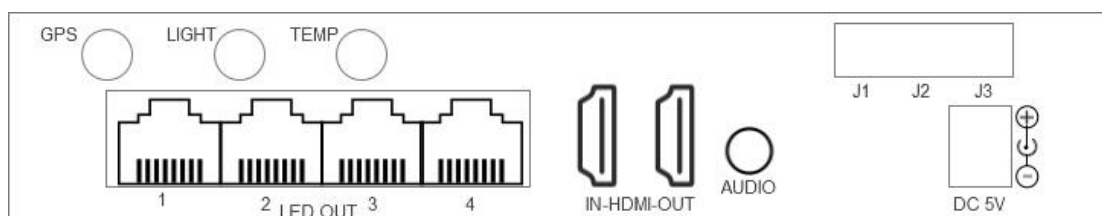
2, Panel introduction

P2、P4 Panel introduction

Front panel



back panel

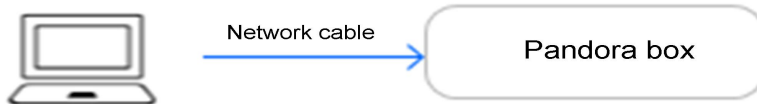


Name	Function introduction
PWR	The power indicator is always on, indicating that the power supply is normal
SYS	The system and app start normally, and the sys is always on; The system starts normally, but app fails to start, sys flashes, once per second System upgrade process, sys flashes rapidly, 4 times per second
NET	When there is PC/mobile connection, the NET light is always on, otherwise it is off; When connecting to the cloud platform, NET flashes once per second; Upload program, NET flashes fast, 4 times per second
RESET	Factory reset button, keep press for 5 seconds to factory
USB1-2	USB2.0*2, update programs (item) and set up Pandora box via U disk
4G	4G communication module antenna interface, can be used for 4G communication
SIM CAPD	4G card slot, supports 4G cards of three major operators
LAN	100M input network port, connected to LAN, can be directly connected to PC
WIFI	Dual mode WiFi supports WiFi AP and WIFI SAT WiFi AP: WiFi hotspot connection available WIFI SAT:Can be connected to a router
HDMI\Media	Dual Mode Switch, HDMI: HDMI priority Media: Async mode
GPS	GPS antenna interface for use in scenarios that require positioning and precise timing
LIGHT	Brightness sensor interface
TEMP	Temperature and humidity sensor interface
LAN1-4	Four gigabit output network ports, connected to all series KYSTAR receiving cards
HDMI	IN:HDMI 1.3 Input interface, external signal

	OUT:HDMI 1.3 Output interface, loop out signal
AUDIO	3.5mm audio output
J1/J3	3-channel relay control switch,
5V DC	Provide 5V/4A power supply

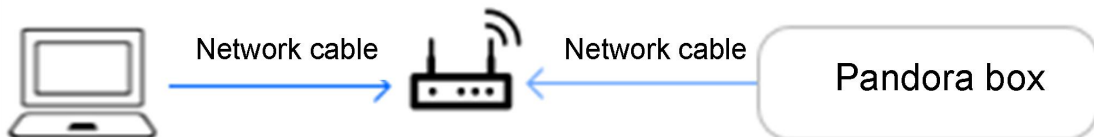
3、Common connection methods

1.network connect directly



Required configuration: none, IP address: 169.254.250.250

2.Wired LAN connection



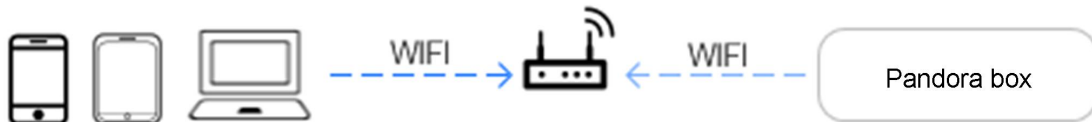
Required configuration: none, IP address: 169.254.250.250

3.WiFi Hotspot connect



Required configuration: WiFi hotspot antenna interface (Pandora WiFi password: 88888888)

4.Wireless LAN connection



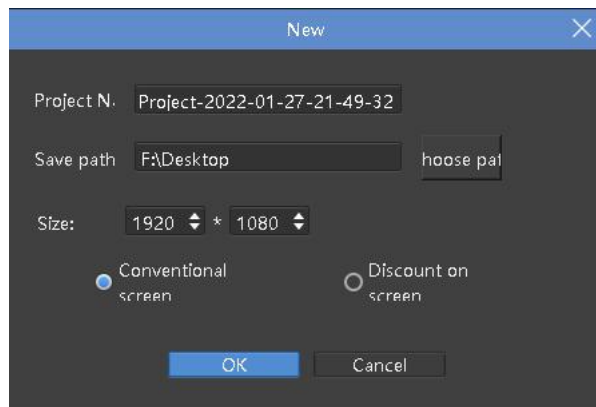
Required configuration: WiFi STA antenna interface

4、Kommander PE

1.Program production

Step 1 open KommanderPE software.

Step 2 create Program,Click the new project file and input the screen size according to the actual size of the LED screen.

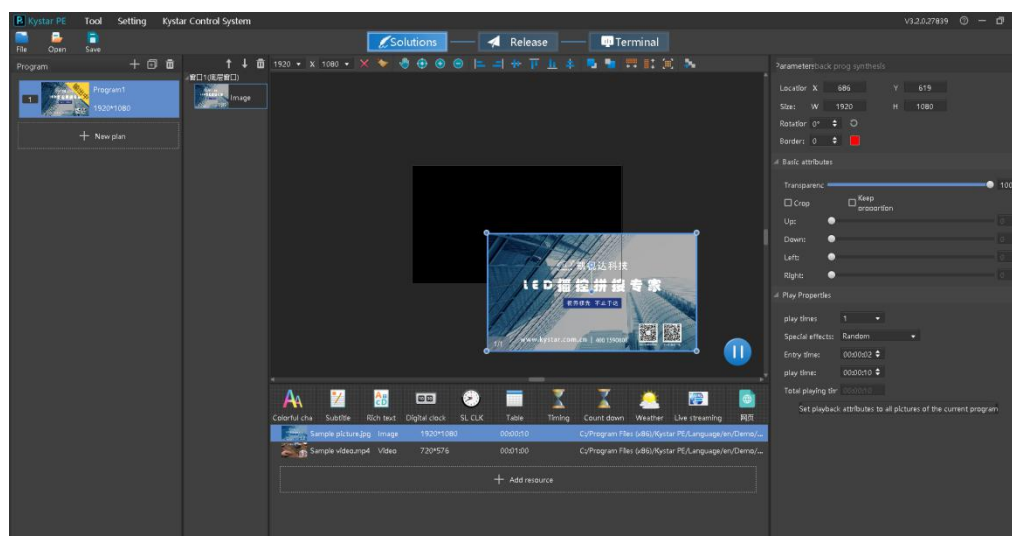


Step 3 click”add source file”——add local media——Choose the material you want to use

Step 4 Select the material of need play and drag it to the playing area

Step5 Click the material in the play area to adjust its position and size and edit its basic parameters

Step6 need add multiple program——click “new program”——Follow steps 2 to 5 again.

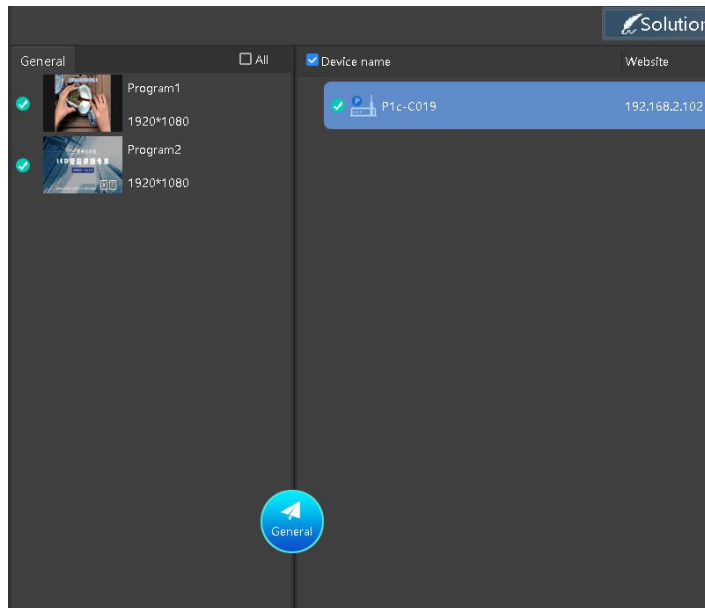


2. Release program

General release

Step 1 Tick the need to publish the show and Pandora's box

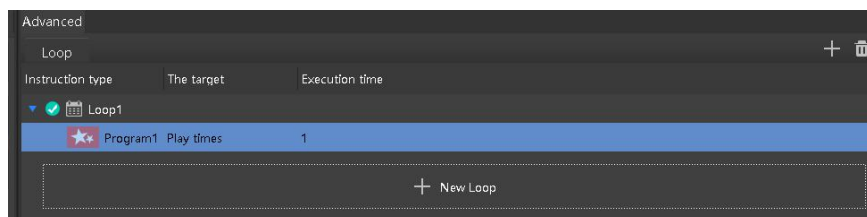
Step2 Click Common Release to enter the upload project interface---upload, wait for complete upload



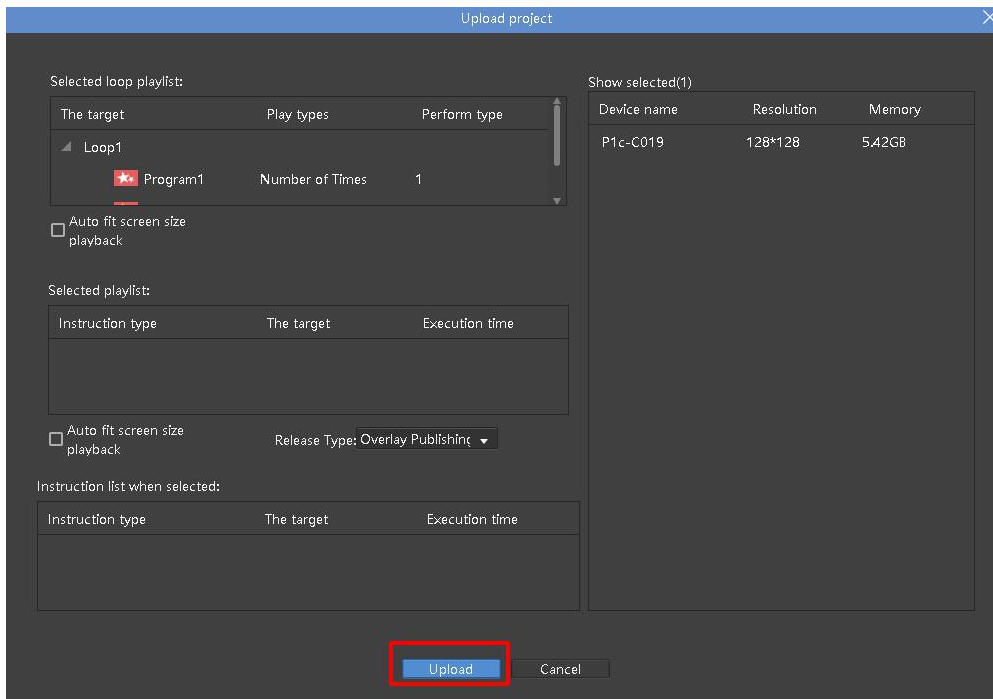
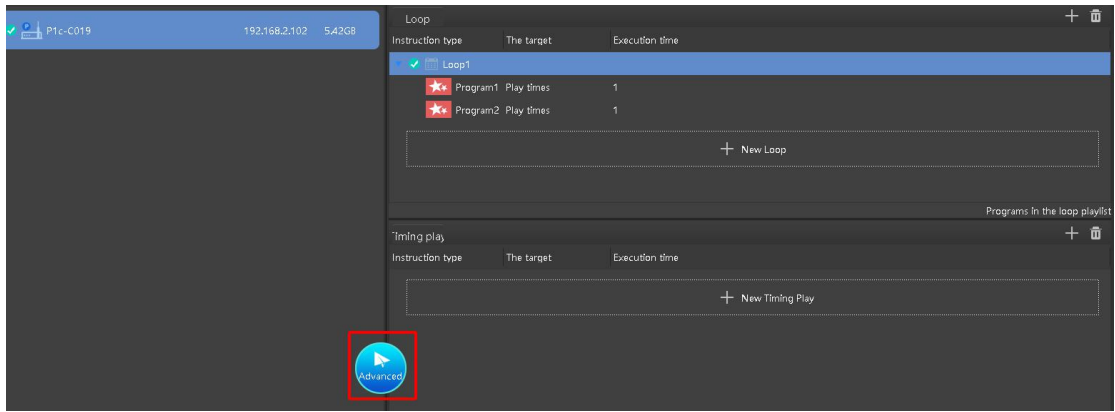
Advanced release

Step 1 Create a new loop - click the plus sign in the upper right corner - add a program that needs to be looped - select the loop list

(Timing playback and timing instructions are added in the same way as loop playback)



Step 2 Select the combination to be published - select the box - click Advanced publish - enter the upload project interface - upload, wait for the upload to complete.



3. Terminal control

Step1 Select the equipment to be operated

Step2 Select the function that needs to be controlled by the terminal.

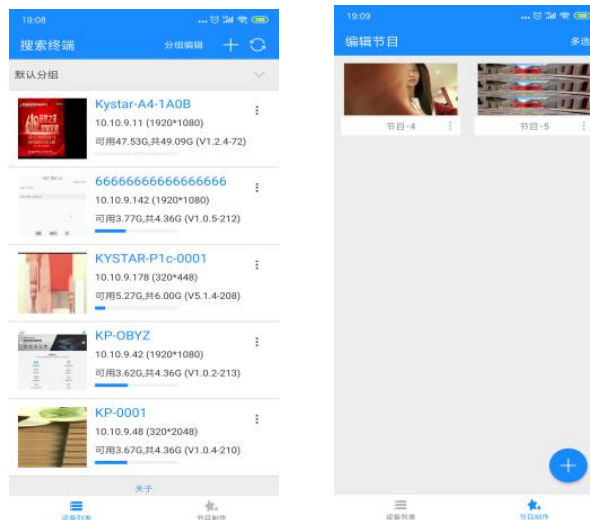


1. Terminal quantity statistics
2. Refresh the terminal, manually add terminal equipment
3. View terminal equipment, select terminal to operate
4. Control terminal brightness, sound, switch screen and other operations
5. Real-time monitoring of terminal playing content and running status
6. View terminal tasks, terminal materials, timing instructions, network settings and other operations

5、 Mobile APP Pandora box

1. Software layout

Pandora box is divided into two modules: "equipment list" and "Program"



2. Software function

2.1 device management

Group and rename devices for easy management

Step: mobile connect local network——open Pandora app——Refresh to get the device

2.2 Program production

Add and arrange materials

Step : Program production——blue+mark——set program information——unload material

2.3 Terminal control

Set the brightness of the terminal device; volume; switch, etc.

Step: Select the device in the device list-secondary menu terminal configuration-select the desired setting

2.4 Program management

To switch the program list and set the timing playback

Step: Device list Selected device-secondary menu Program list-play/download/delete

2.5 Mobile phone debug screen

Wizard debug screen by mobile phone

Step: Select the device in the device list-secondary menu screen adjustment-enter the administrator debug screen